

New

1100 - Litre Model

with Safety Lid



The new patented 1100 - litre wheeled bin complies with the extended European EN 840-5 and EN 840-6 standard requirements. The safety device has been specifically designed to guarantee maximum safety in all circumstances.

Technical Specifications

Materials

- Injection-moulded, high density Polyethylene (HDPE), recyclable.
- Galvanised Steel
- Rubber-tyred wheels

Standards

- The new 1100-litre wheeled bin complies with the extended european EN 840-5 and EN 840-6 standard requirements.

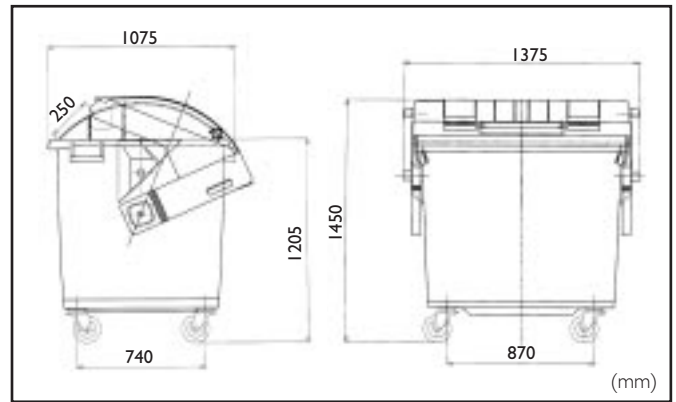
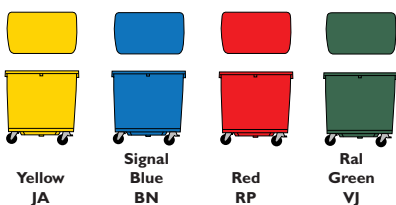
Personalisation

- Engraving, hot stamping, self-adhesive labels

Options

- Centralised braking
- Towbar
- Lid locking device
- Identification system available through a microchip

Colours



The bin is fully sealed thanks to the automatic closing mechanism which closes the lid when the bin has been emptied by the collection vehicle.



When open, the lid automatically remains in an open position thanks to two boxes placed on the lateral sides of the wheeled bin.



To close the lid, the two red push-buttons have to be pressed at the same time with both hands.



Plastic Omnium Urban Systems Limited
 Plastic Omnium House
 Tweedale Industrial Estate
 Madeley, Telford, Shropshire TF7 4JR
 Tel: (01952) 582583
 Fax: (01952) 586453
<http://www.plasticomnium.com/services>